

FACSCelesta 1

STARTUP:

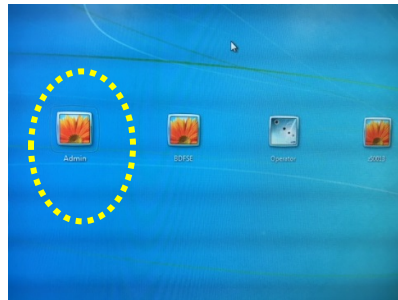
1. Turn on the POWERVAR



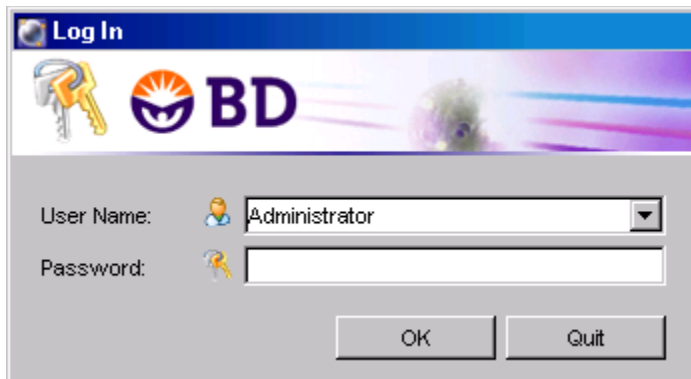
2. Turn on the FACS, click the green button



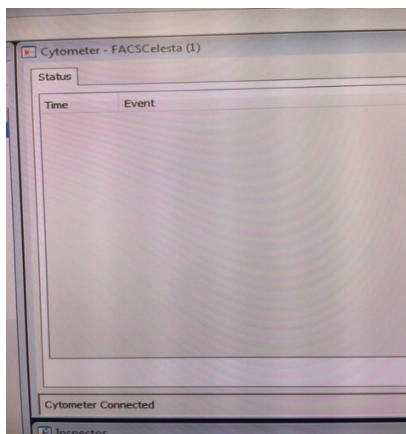
3. And then the computer and log in Admin and insert the password



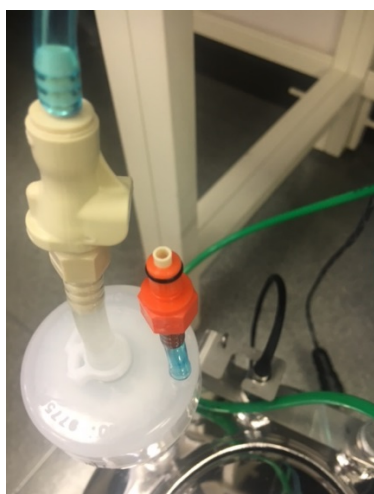
4. Double-click the shortcut icon **BD FACSDiva Software** and put user name and password



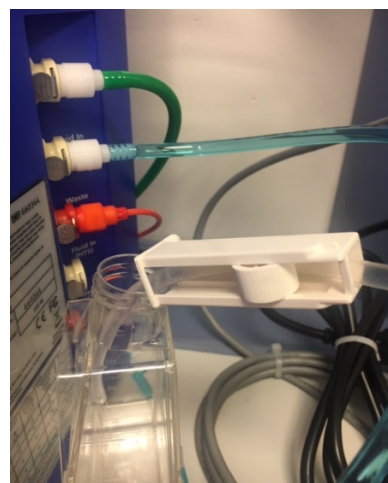
5. Check that the workstation has successfully connected to the cytometer, check that the cytometer window **Status** displays the message **Cytometer Connected**



6. Do not use the instrument before 30 minutes and in the meantime remove the bubbles from the filters (A and B) and run for 5min PBS



A



B

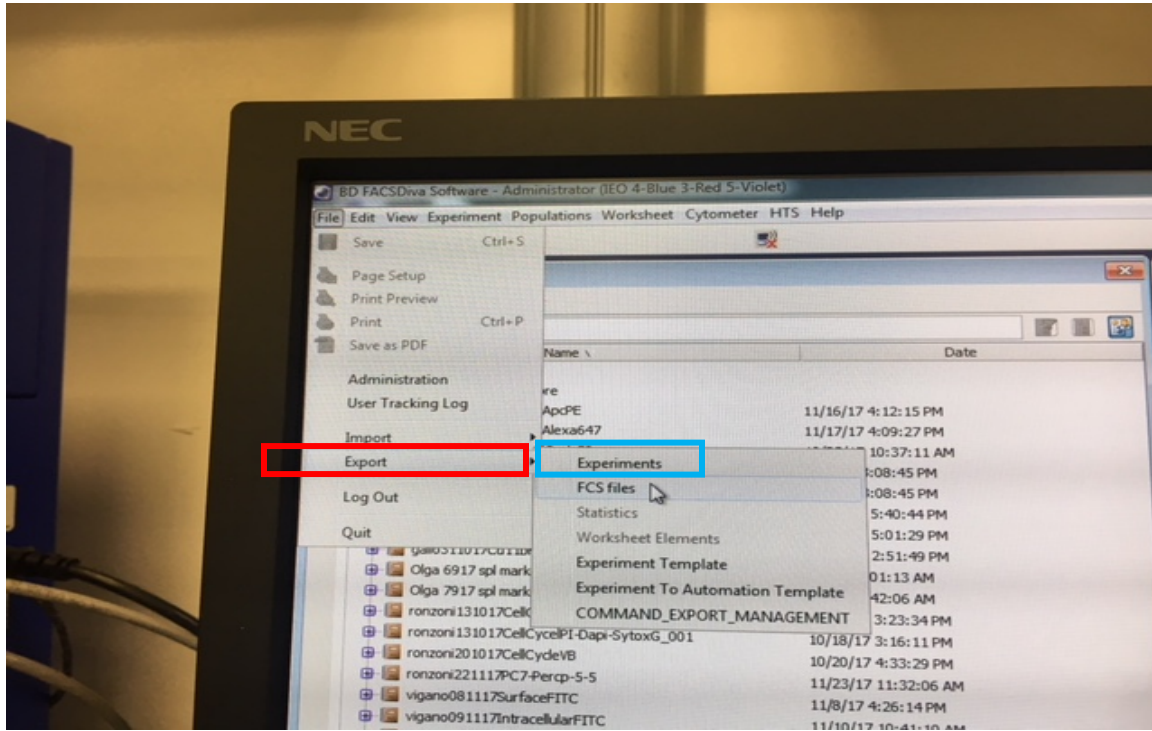
SHUTDOWN:

1. Load a tube containing H₂O and make **PRIME** twice and throw away the tube
2. Load a tube a tube containing 4 ml of FACSClean solution and let it run for 5 min in High Flow Rate
3. Load a tube a tube containing 4 ml of FACSRinse solution and let it run for 5 min in High Flow Rate
4. Load a tube a tube containing 4 ml of H₂O and let it run for 5 min in High Flow Rate
5. Load a tube a tube containing 4 ml of FACSClean and open the tube support bracket and aspirate for 1min
6. Load a tube a tube containing 4 ml of H₂O and open the tube support bracket and aspirate for 2min
7. Leave a tube containg H₂O and set the FACS to **STANDBY**
8. Empty the Waste Tank and fill it with a little bleach (Only if is full SENSOR 4 arrows)
9. Fill the Sheath Tank with BD FACFlow (Only if is empty SENSOR 2 arrows)
10. Disconnet the cytometry **Cytometry> Standby**
11. Tranfer your data to server
11. Turn off the programm
12. Check if someone is booked. If there is a gap to 2hrs or more between you and the next user switch off the Cytometry otherwise laeve the Cytometry on in **STANDBY**

EXPORT Experiment:

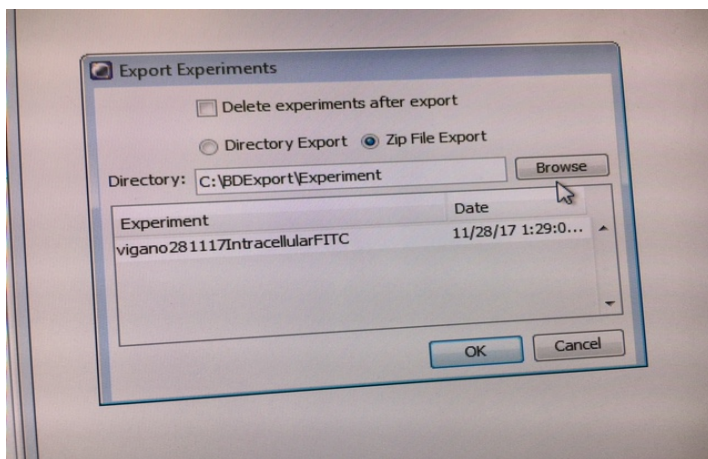
1. Select one or more experiments in the **Browser**.
2. Select **File > Export > Experiments**.

Alternatively, right-click the selected item(s) and select **Export > Experiments**



3. Select Directory Export to export the experiment into a folder (**C:\ BDExport\Experiments \ your folder**)

4. Zip File Export to export the experiment as a Zip file



5. Verify that the experiments listed are those you intended to export. (**C:\ BDExport\Experiments \ your folder**)

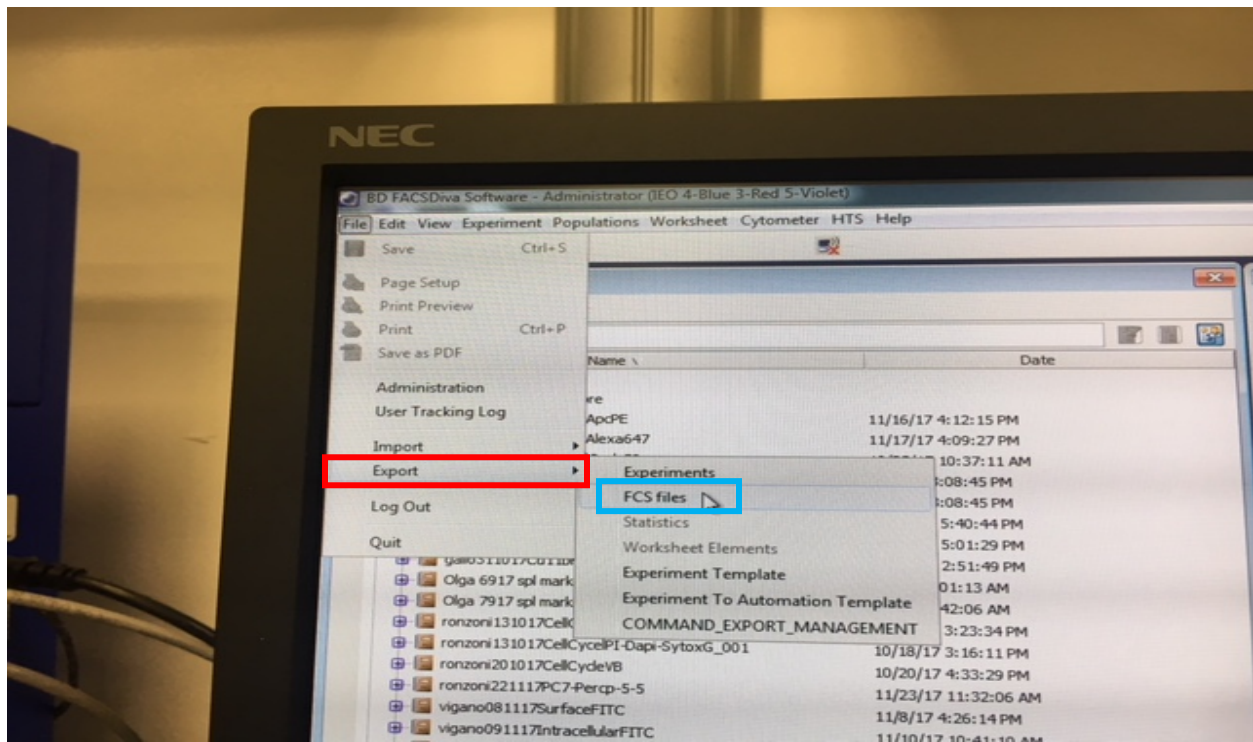
6. Select the Delete experiments after export checkbox if you want to delete the listed experiments from the Browser after exporting.

EXPORT FCS Files:

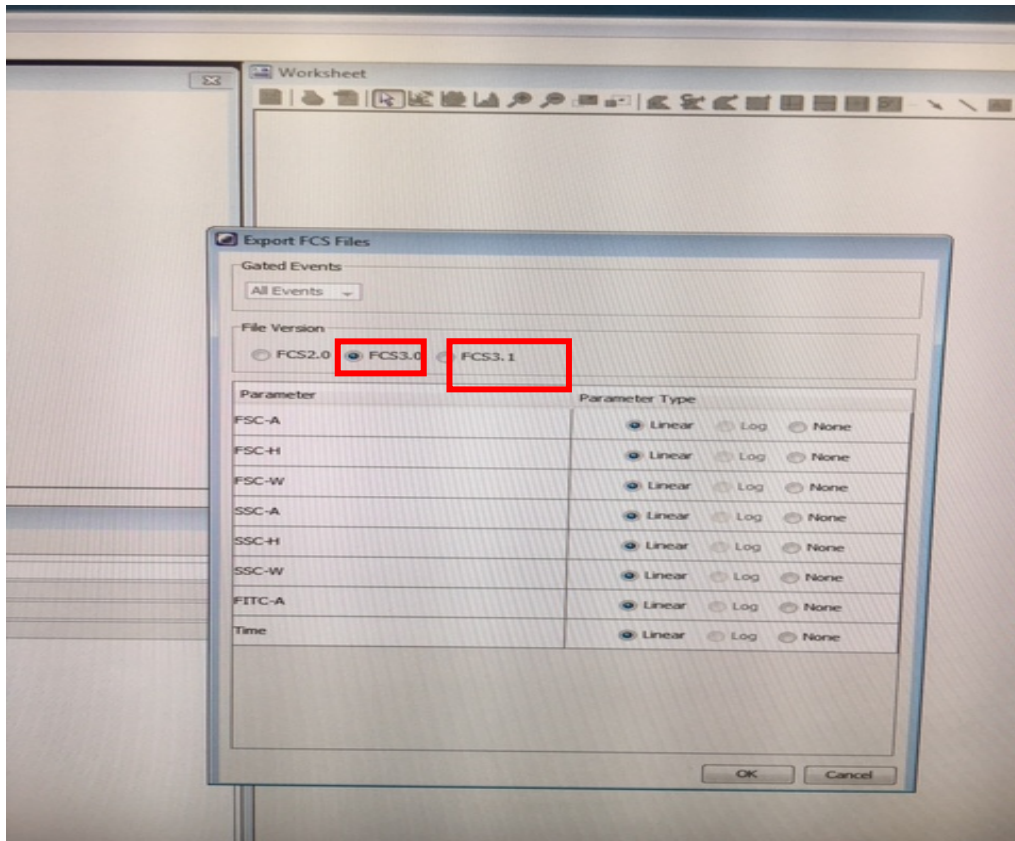
1. Select experiments, specimens, or tubes to export.

2. Select **File > Export > FCS files**.

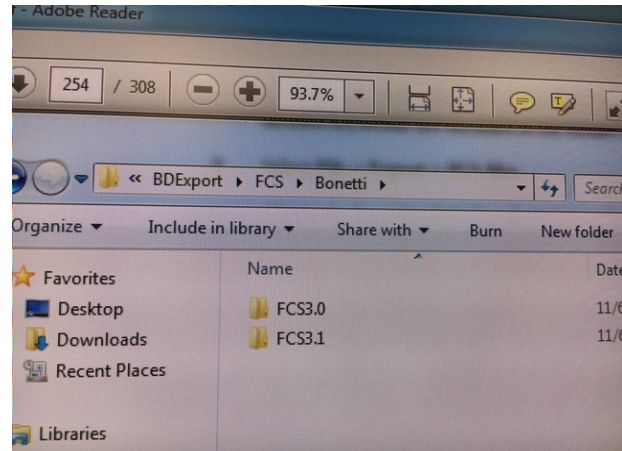
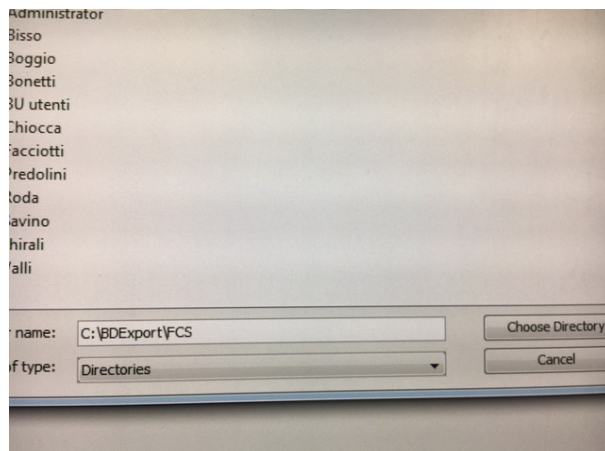
Alternatively, right-click the selected item(s) and select **Export > FCS files**.



3. Specify the FCS file version: FCS 3.0, or FCS 3.1.



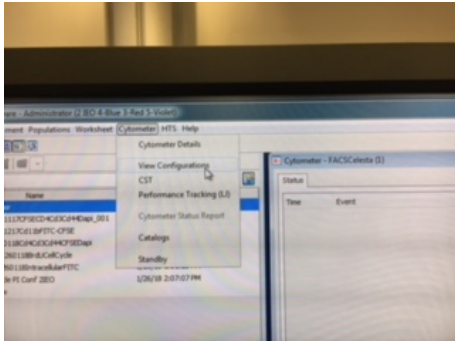
4. Select Directory Export to export the FCS files into a folder (C:\ BDEExport\FCS \ your folder). Remember to save both FCS Files version 3.0 and 3.1 in two different folder



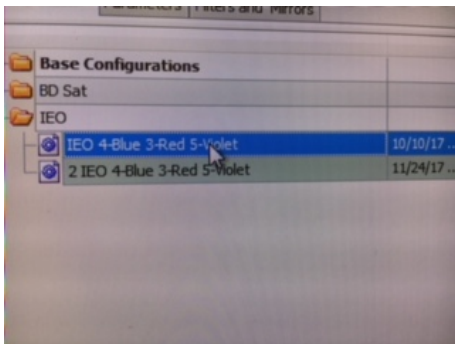
5. Transfer your experiment and FCS files (FCS3.0 and FCS3.1) on the Server. Remember I DON'T do a Back Up

CHANGE THE CONFIGURATION:

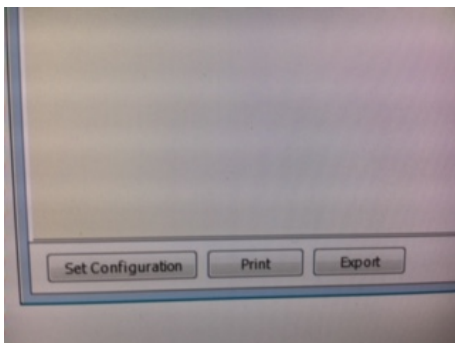
1. Select **Cytometry > View Configuration**



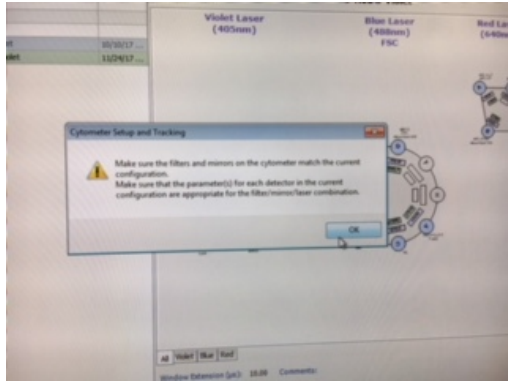
2. Select the configuration



3. Click **Set Configuration**



4. Click **OK**



5. Close the view configuration page

6. USE CST SETTING

